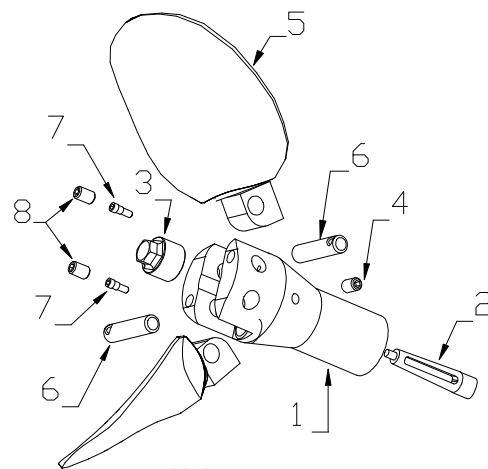
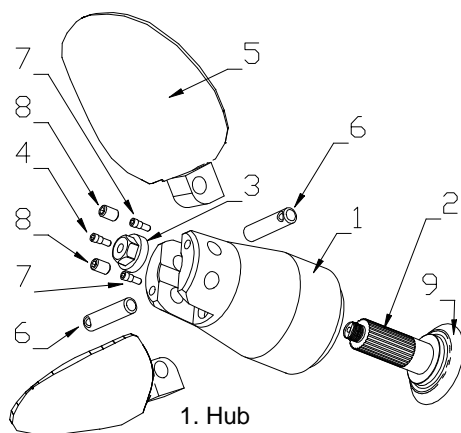


STANDARD SHAFT

- mount the hub (1) on the shaft (2). Make sure the prop cone and keyway mate properly with shaft and key and the top of key does not touch the hub! File key if necessary.
- apply a small drop of loctite to the threads of the nut (3) and tighten strongly (80 Nm).
- apply a small drop of loctite to the threads of the setscrew (4) and tighten (20 Nm)
- grease the bearing parts of the hub (1), bladegears (5) and pivot pins (6). Use a water-resistant grease.
- align the blades (5) with the boring and push the pivot pins (6) into the hub (1).
- mount the socket cap (7) and tighten (2 Nm).
DO NOT USE loctite to secure the socket-screws (7).
- apply a small drop of loctite to the threads of the security screws (8) and tighten (20 Nm)
- check the function and see that the blade movement is free
- make sure you have a shaft anode with good contact to the shaft.



1. Hub
2. Shaft
3. Nut (SW24)
4. Set-Screw M8x10
5. Blades
6. Pivot Pins \varnothing 14mm
7. Socket Screws M5x25
8. Set-Screws M10x10



1. Hub
2. Shaft
3. Nut (SW22)
4. Lock-screw M8x30
5. Blades
6. Pivot Pins \varnothing 14 mm
7. Socket-Screw M5x25
8. Set-Screw M10x10
9. Spacer (engine part)

SAILDRIVE

- see that the spacer (9) is mounted
- make sure your anode has good contact with saildrive
- mount the hub (1) on the splined shaft (2) and tighten the nut (3).
(See the torque specification in the installation instruction of your saildrive)
- apply a small drop of loctite to the threads of the set-screw (4) and tighten to secure the nut (3).
- grease the bearing parts of the hub (1), bladegears (5) and pivot pins (6). Use a water-resistant grease.
- align the blades (5) with the boring and push the pivot pins (6) into the hub (1).
- mount the socket cap-screws (7) and tighten (2 Nm). DO NOT USE loctite to secure the socket- screws (7).
- apply a small drop of loctite to the thread of the set screws (8) and tighten (20 Nm)
- check the function and see that the blade movement is free.

OPERATION UNDER SAIL : Stop engine and put in gear to fold propeller under sail.

WARNING:

Engage forward/reverse at idling RPM`s only. Stop the engine immediately if any strange sounds or vibrations are noticed coming from the propeller. Check that the propeller works in both forward and reverse before starting each voyage. Do not turn the propeller shaft over until the boat is in the water. Keep away from moving parts whilst handling the propeller, the blades are like knives, and can cause considerable damage. Make sure that the propeller blades do not suddenly open or close and trap your fingers for example. Do not attempt to come close to the propeller unless the engine is stopped.